



Accent B7c 8-Light Kit

Product Manual

English

Thank You!

Thank you for purchasing the Aputure Accent B7c 8-Light Kit.

Instructions

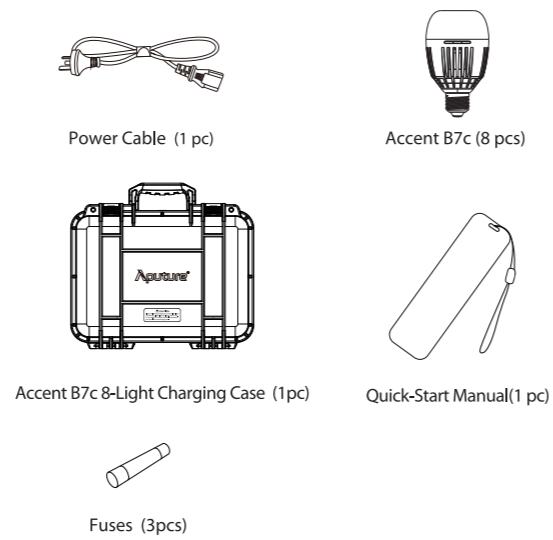
- Please read this product manual carefully.
- Keep this product manual and always include it when passing the product onto third parties.
- WARNING:** Do not place the product near any corrosive chemicals. Corrosion may cause the product to malfunction.
- Only use a microfibre or dry cloth to clean the product.
- Be careful not to damage the light by dropping it or otherwise introducing physical shock.
- Do not leave the product in excessive heat, high temperatures can cause the product to malfunction.
- Please have the product checked by the authorized service or agent if your product has some problems. Please note that this warranty does not apply to repairs arising out of the malfunction of unauthorized disassembly, although you may request such repairs on a chargeable basis.
- Use of original Aputure cable accessories is recommended. Please note that this warranty does not apply to repairs arising out of the malfunction of non-original Aputure accessories, although you may request such repairs on a chargeable basis.
- The product is certificated by RoHS, CE, KCC and Japan MIC etc. Please operate the product in full compliance with the operation standards. Please note that this warranty does not apply to repair arising from malfunction, although you may request such repairs on a chargeable basis.
- The instructions and information in this manual are based on thorough, controlled company testing procedures. Further notice will not be given if the design and specifications change.

Intended Use

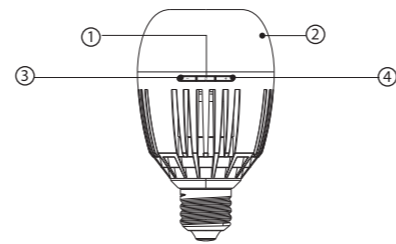
Intended use of the Accent B7c 8-Light Kit includes:

- The user has read the instructions of this manual.
- The user is using the products within the operating conditions and limitations described in this product manual.
- "Improper use" means using the products other than as described in these instructions or under operating conditions which differ from those described herein.

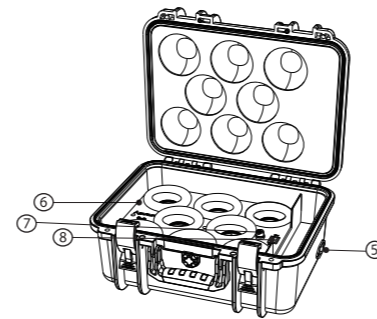
Components List



Product Details



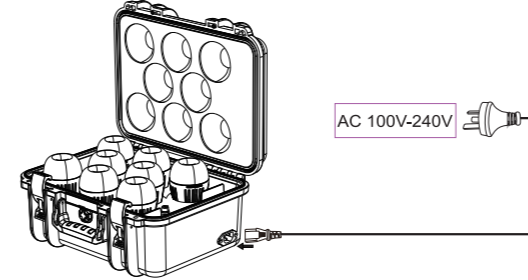
- Power Button
- Diffusion Cover
- "-" Brightness Button
- "+" Brightness Button
- AC IN
- Lamp Socket
- Fuse Holder
- Power Switch



Operation Instructions

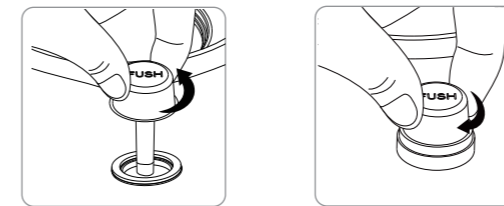
1. Powering the Accent B7c 8-Light Charging Case

1). AC Power Supply



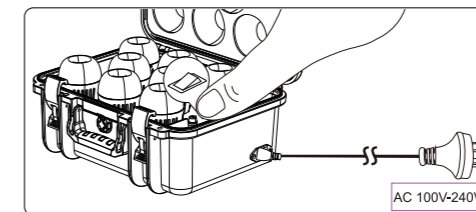
2). Attaching/detaching the fuse

If the fuse burns out, replace it with a new 3A fuse. To open the Fuse Holder, rotate it counter-clockwise to unscrew it, and remove the burnt out fuse. Proceed to install a new fuse by inserting it into the Fuse Holder, returning the Fuse Holder to its designated position, and rotating it clockwise to screw it into place.



2. Charging

To charge the B7c bulbs using the charging case, plug the AC power cable into the case and a power outlet. Then ensure that the power switch is in the "ON" position. B7c bulbs can then be charged by inserting them into each of the "push-pull lamp sockets"



If the LEDs are active and outputting light, the B7c's internal battery charges slowly. When the B7c is in standby mode or is powered off, the bulb charges more quickly and can complete a full charge cycle (0-100%) in approximately 2 hours.

If the bulb's internal temperature exceeds 45°C, a protection mechanism activates, and all charging processes cease until the light's internal temperature cools to below 45°C.

Battery Charging Speeds

- In the fastest charging scenarios, the B7c can charge up to:
 - 50% in 45 minutes
 - 80% in 74 minutes
 - 100% in 120 minutes

Checking the Charging Status

When the bulb is in standby mode or is powered off, press the "+" or "-" buttons to initiate a status check. If the battery is charging, the bulb will pulse three times at 3200K. If the battery is fully charged, the bulb will light up for 3 seconds at 3200K.

3. B7c Quick Start Color Code Guide

As the B7c has no screen, we've programed some color sequences to signify different actions. Here is a quick reference guide.

Function/Mode	Trigger	Light Pattern
Bluetooth Reset	Simultaneously long-press the power button and the "+" or "-" button for 5 seconds.	The light will flash Red, Green then Blue.
Charging in Progress	When the bulb is in standby mode or is powered off, press the "+" or "-" buttons.	The light will output 3200K at 10% brightness, pulsing three times.
Fully Charged	When the bulb is in standby mode or is powered off, press the "+" or "-" buttons.	The light will output 3200K at 10% brightness for three seconds.
Switch to Standard (AC) Mode	Simultaneously press the power button, the "+" button, and the "-" button.	The light will emit green at 30% output, then gradually dim to 0%.
Switch to Battery (DC) Mode	Simultaneously press the power button, the "+" button, and the "-" button.	The light gradually fades into a green glow from 0% to 30% brightness.
Checking AC Mode	When not connected to AC power, to confirm that the light is in AC mode, long-press the power button for 3 seconds.	The light will pulse green at 10% brightness 3 times.
Checking the Battery Charge Level	You can check the B7c charge level in any mode. To perform a check, simultaneously press the "+" and "-" buttons.	The bulb will pulse with blue light, with the number of pulses corresponding to its charge level. 1 Pulse = 0-20% 2 Pulses = 20-40% 3 Pulses = 40-60% 4 Pulses = 60-80% 5 Pulses = 80-100%

4. B7c Power On/Off

Press the power button in the center of the light to toggle the fixture on or off.

When in "Standby Mode," short-press the power button once to toggle the fixture on and off.

To fully shut down the fixture or to turn it off from a shutdown state, long-press the power button for 3 seconds.

When the bulb powers on from a standby or off state, it will resume its previous settings.

5. B7c CCT Mode

You can toggle through the six built-in CCT presets by double-pressing power button: 2000K, 2700K, 3200K, 4300K, 5500K, 6500K. You can also adjust the B7c's CCT more precisely between 2,000K-10,000K using the Sidus Link App.

6. B7c Brightness

You can toggle through ten steps of brightness adjustment using the onboard controls, or choose a precise output level using the Sidus Link App. Press the "+" button to increase the brightness or press the "-" button to decrease the brightness. This will cycle between 10 dimming presets between 10% to 100%. You can also adjust the brightness more precisely using the Sidus Link App.

7. B7c Bluetooth Mode

Simultaneously long-press the power button and the "+" or "-" button for 5 seconds to reset the fixture's Bluetooth configuration. When the Bluetooth Reset sequence initiates, the bulb will proceed to pulse red, green, then blue in sequence. Then you can connect to the B7c using the Sidus Link App.

8. B7c Power Supply Modes

This fixture can operate in two different power supply modes Standard (AC) Mode and Battery (DC) Mode.

Standard/AC Mode

In Standard (AC) Mode, the bulb behaves as a regular light bulb and turns on when it receives power from a lamp socket (E26/E27). When the lamp the bulb is installed in is switched off, the bulb will also immediately turn off.

Battery/DC Mode

In Battery (DC) Mode, the bulb switches to its internal battery power when it does not receive any AC power from a lamp. Switching between these states causes the light to turn off for a brief moment, before resuming its previous settings.

Switching Between Modes

To switch between the two modes, simultaneously press the power button, the "+" button, and the "-" button. To signify that it is in Standard (AC) Mode, the bulb emits a green glow at 30% brightness, and then slowly fades to 0%. To signify that it is in Battery (DC) Mode, it gradually fades into a green glow from 0% to 30% brightness.

Checking the Power Supply Mode

To determine which mode the bulb is currently in, long-press the power button for 3 seconds. If the light pulses green three times, the bulb is in Standard (AC) Mode. If the light turns on at 10% brightness, then the fixture is in Battery (DC) Mode.

9. B7c Preventing Overheating

The ambient operating temperature of the Accent B7c is -10 ~ 40°C. This product utilizes a built-in lithium battery. To enhance the battery's stability and longevity, we use high-temperature-resistant batteries, which can be used in an environment of -10 ~ 40°C.

Keeping the ambient temperature well below 40°C is recommended to ensure that the B7c does not experience any overheating issues. Facing the bulb upright also provides the best airflow; however, the B7c is operable in any position.

If the light enters a "Battery Protection Mode," it will be able to resume operation once the internal temperature of the components cools down.

Standard/AC Mode

In Standard (AC) Mode, if the bulb's internal temperature exceeds 80°C, it enters a "Battery Protection Mode," wherein the battery and LEDs are powered off to protect and cool the internal components.

Battery/DC Mode

In Battery (DC) Mode, if the bulb's internal temperature exceeds 70°C, the maximum output power of the light is reduced to 80%. Should the internal temperature continue to rise and exceed 73°C, the light enters a "Battery Protection Mode," wherein the battery and LEDs are powered off to protect and cool the internal components.

10. Sidus Link App Control

1) Sidus Link App Control allows you to more precisely adjust all of the output settings of the Accent B7c, including fine-tuning CCT and brightness, in addition to accessing the light's HSI color-tunability, and nine built-in lighting effects, including Paparazzi, Fireworks, Faulty Bulb, Lighting, TV, Party, Pulsing, Cop Car, and Fire.

2) Using the Sidus Link App

You can download the Sidus Link app from the iOS App Store or Google Play Store to enhance the light's functionality. Please visit sidus.link/app/help for more details regarding how to use the app to control your Aputure Lights.



Get Sidus Link® App



Sidus.link/app/help

Specifications

Accent B7c	
CCT	2,000K-10,000K
CRI	95+ (2,500K-10,000K)
TLCI	96+ (2,500K-10,000K)
CQS	95+ (ave. 2,500K-10,000K)
SSI (Tungsten)	85
SSI (D55)	74
Lumens	570
Lamp Socket Type	E26/E27
Control Methods	On-board Controls, Sidus Link App

Wireless Connectivity	Bluetooth Mesh
Voltage Input	100V~240V
Current Input	≤0.25A
Power Input Maximum	12W
Power Output Maximum (LED Light Source)	7W
Operation Temperature	-10~40°C
Lithium-polymer Battery	1300mAh 7.4V
Charging Time	2h (When in standby mode or powered off)
Battery Life	Max Brightness: 70+minutes; Min. Brightness: 20+hrs
Cooling Mode	Passive Cooling
Dimension	φ70mm*118mm/φ2.75*4.64in
Weight	240g/0.529lb

Accent B7c 8-Light Charging Case

Power Input	100V~240V AC
Power Cable Type	IEC AC Power Cable
Power Cable Length	1.2m
Max Power Draw	≤100W
Socket Connector	E27
Fuse Type	3A
IP Rating	N/A
Cooling Method	Passive
Dimensions	35.8*28.4*16.7cm / 14.09*11.2*6.59in
Weight (Empty)	3304g / 7.28lbs
Weight (Full)	5200g / 11.46lbs

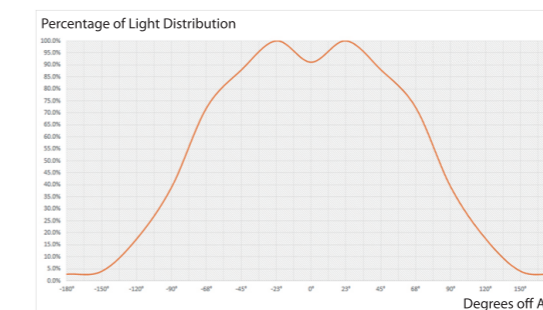
Photometrics

CCT	0.3M	0.5M	1M	2M
2000K	470 lux	180 lux	46 lux	12 lux
2700K	860 lux	330 lux	87 lux	22 lux
3200K	885 lux	345 lux	89 lux	23 lux
4300K	970 lux	370 lux	100 lux	26 lux
5500K	1095 lux	430 lux	110 lux	28 lux
6500K	1180 lux	460 lux	124 lux	32 lux

* This data reflects the average illuminance of the light at these distances. The actual values may shift slightly between different lights.

** These luminance values are measured at the brightest point of the bulb, directly above the fixture.

Light Distribution Curve



Detailed product manual can be found on www.aputure.com

Aputure
GUARANTEE CARD

Aputure
Imaging Industries Co., Ltd.
Inspection: Qualified

Add: T3 Building 11, Luohua Industrial Estate, Nanyang West Road, Shenzhen, Guangdong

Serial No.	
Item Name	
Purchase Date	
Buyer Name	
Buyer Phone	
Buyer Add	
Franchise Seal	

Aputure
Service Warranty (EN)

Aputure Imaging Industries Co., Ltd. warrants the original consumer purchaser from defects in material and workmanship for a period of one (1) year after the date of purchase. For more details of warranty visit www.aputure.com

Important: original sales receipt. The date the dealer has written on it, the date, serial No. of the product. This information is required for warranty service.

This warranty does not cover:

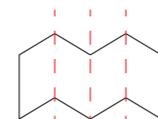
- Damage that is the result of misuse, abuse, accident (including but not limited to damage by water), faulty connection, selection or equipment for which was not intended.
- Cosmetic defects that appear more than thirty (30) days after the date of purchase. Cosmetic damage caused by improper handling is Damage that occurs when the product is being shipped to whoever will service it.

This warranty is void if:

- The product identification or serial No./label is removed or defaced in any way.
- The product is modified or repaired by any person other than Aputure or an authorized Aputure dealer or service agency.

Aputure Imaging Industries Co., Ltd.
Add: Heping West Road, Shenzhen, Guangdong
E-MAIL: cs@aputure.com
Sales Contact: (86)755-85256594-413

折页方式:



为折线(不印刷)

折页成型 (英文在正面) :



Aputure 深圳市爱图仕影像器材有限公司		图号	图号
设计项目	213 说明书-修改内容	版本	AP-213-PR-02
尺寸 (mm)	560*240mm 折页尺寸: 80*120mm	设计师	V1.0
材料工艺	70g 书纸, 正反两面印刷	日期	Tina
备注	料号: 521300040001		20210108

