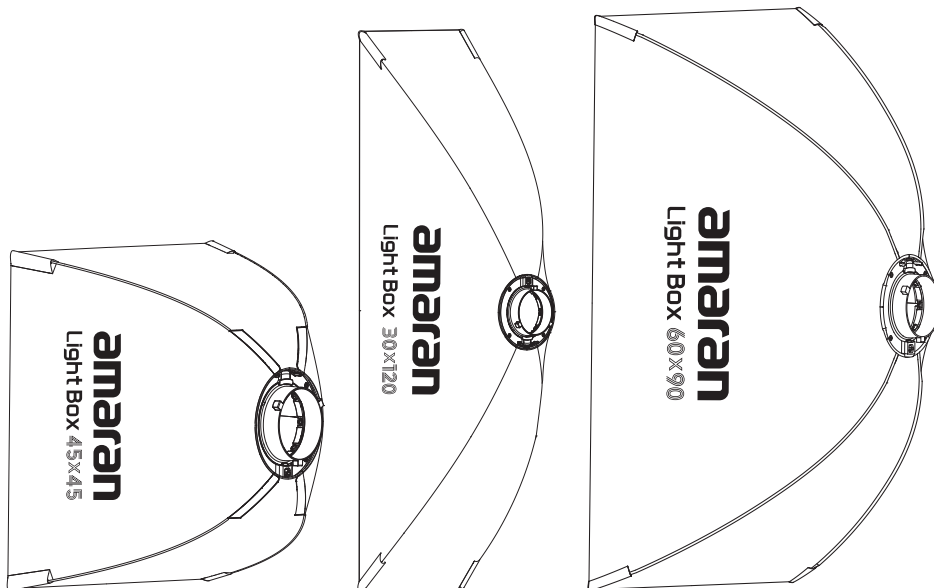


amaran®



amaran Light Box 45×45 / 60×90 / 30×120

User Manual

English

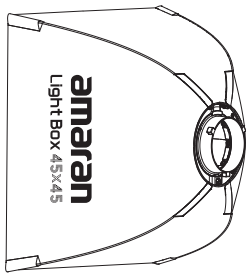
Introduction

Thank you for purchasing the amaran Light Box series.

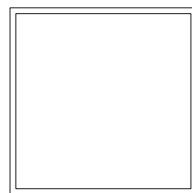
The amaran Light Boxes deliver clean, straight reflections with its rectangular design, making them ideal for bringing out fine, precise details over subjects in product or portrait photography. The Light Box 45×45's square shape is ideal for on-the-go when paired with a compact COB, while the Light Box 60×90 and 30×120 casts a long, narrow light source with greater flexibility for half and full-length portraits. All equipped with a one-snap, flat-pack design, each Light Box can be set up and dismantled in one second, offering efficient transport and storage so creators can maintain linear lighting in any environment.

Components List

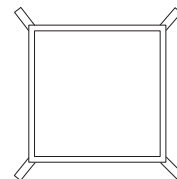
amaran Light Box 45×45



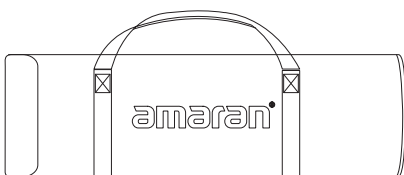
amaran Light Box 45×45 *1



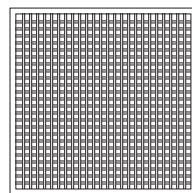
amaran Light Box 45×45
1.5 Stop Diffusion Cloth * 1



amaran Light Box 45×45
Inner Baffle Diffusion * 1



amaran Light Box 45×45
Carrying Bag * 1



amaran Light Box
45×45 Grid * 1

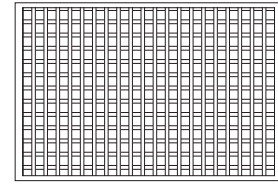
amaran Light Box 60×90



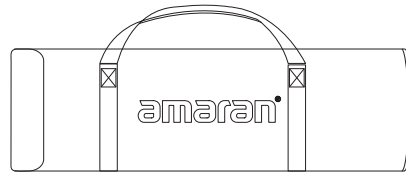
amaran Light Box 60×90 *1



amaran Light Box
60×90 Inner Baffle



amaran Light Box
60×90 Grid * 1

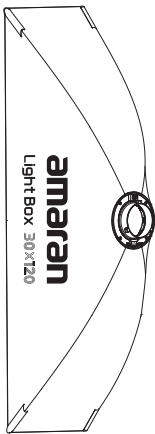


amaran Light Box 60×90
Carrying Bag * 1

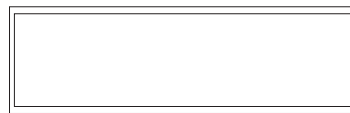


amaran Light Box 60×90
1.5 Stop Diffusion Cloth * 1

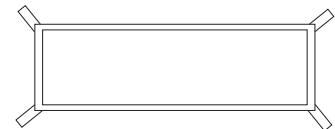
amaran Light Box 30×120



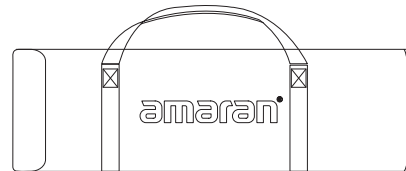
amaran Light Box 30×120 *1



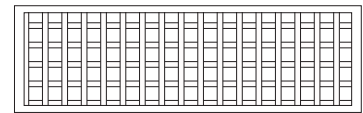
amaran Light Box 30×120
1.5 Stop Diffusion Cloth * 1



amaran Light Box 30×120
Inner Baffle Diffusion * 1



amaran Light Box 30×120
Carrying Bag * 1



amaran Light Box
30×120 Grid * 1

Tip: The illustrations in the manual are diagrams for reference only. Due to the continuous development of new versions of the product, if there are any differences between the product and the user manual diagrams, please refer to the product itself.

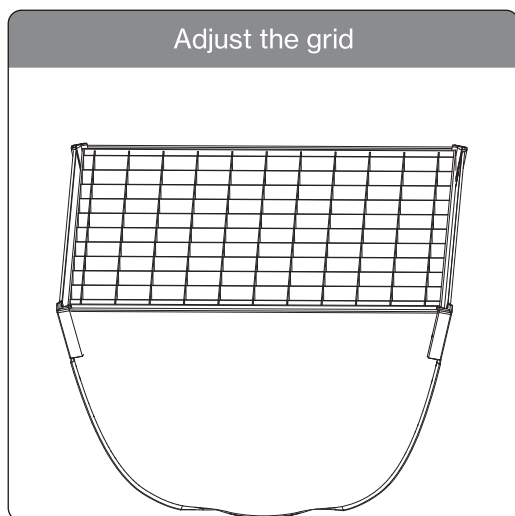
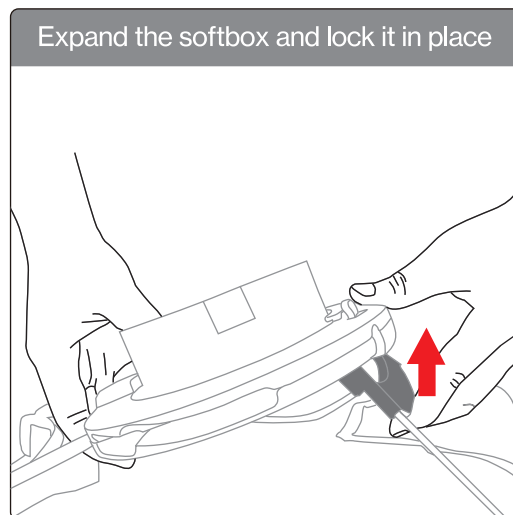
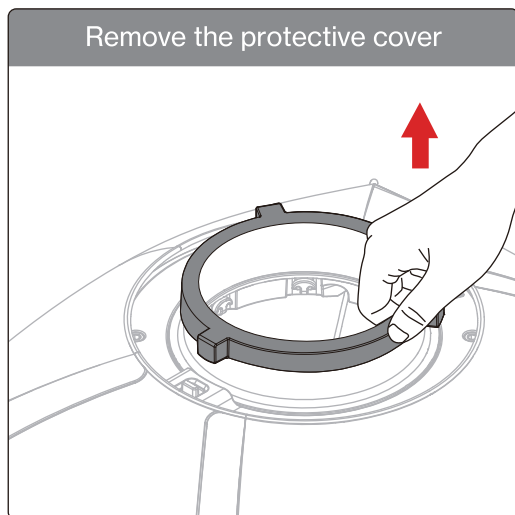
Operations

Installation

Preparation: Before installing the softbox, remove the protective cover from the speed ring. Ensure that the softbox and its accessories are in good condition.

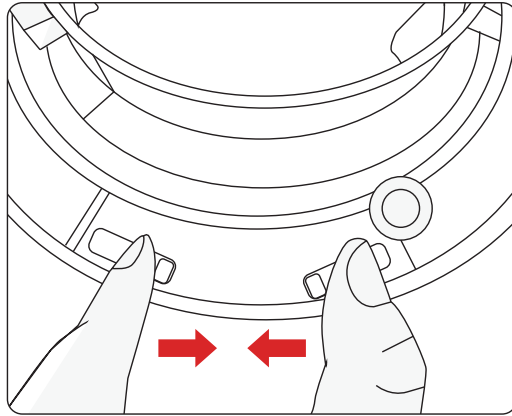
Unfolding the Softbox: Pull up the expansion handle in the indicated direction to fully open the softbox and ensure it is securely locked. Adjust the diffusion fabric and grid attachment positions according to lighting requirements to achieve the best soft light effect.

Connecting to the Light Fixture: Align the assembled softbox with the light fixture interface. Securely attach the Bowens mount speed ring to the lamp head, ensuring that the softbox is firmly fixed in place.



Disassembly

Releasing the Support Rods: When disassembling, use two fingers to press the two latches on the base of the softbox simultaneously towards the center. This will release the locking mechanism, allowing the softbox to automatically collapse and fold.



Specifications

Product Name	amaran Light Box 45×45	amaran Light Box 60×90	amaran Light Box 30×120
Product Dimensions (Unfolded)	34.5×45.0×45.0cm 13.58×17.72×17.72 in	43.0×60.0×90.0cm 16.93×23.62×35.43 in	41.0×30.0×120.0cm 16.14×11.81×47.24 in
Product Dimensions (Folded)	56.5×16.0×7.0cm 22.24×6.30×2.76 in	78.5×27.0×8.0cm 30.91×10.63×3.15 in	81.0×21.0×7.0cm 31.89×8.27×2.76 in
Net Weight	0.70kg / 1.54lbs	0.90kg / 1.98lbs	0.90kg / 1.98lbs
Gross Weight	0.90kg / 1.98lbs	1.10kg / 2.43lbs	1.10kg / 2.43lbs

Important Safety Instructions

When using the amaran softbox series, always follow basic safety precautions, including:

1. Read and understand all instructions before use.
2. Do not disassemble the product yourself. If damaged, please contact customer service.
3. Do not expose the product to high temperatures for extended periods, as this may accelerate aging and deformation.
4. This device is designed for professional use only. Keep it out of reach of children.
5. When used with lighting equipment, certain areas may become hot. Be cautious to avoid burns.
6. Avoid placing the device near flammable and volatile solvents such as alcohol or gasoline.
7. Use the product according to the instructions in the manual. Improper operation may cause damage.
8. This manual is based on company standards. Product design and specifications are subject to change without prior notice.

Disclaimer

It is important to read the product manual of this product prior to use in order to ensure proper use with a complete understanding. The product manual should be securely stored for future reference after reading. Improper operation of this product may result in severe personal injury to yourself or others, as well as potential damage to the product and loss of property. As soon as you use the product, you are deemed to have understood, recognized and accepted all the terms and contents of the product manual. Users assume responsibility for their own conduct and any resulting consequences. amaran is not liable for any damages suffered as a result of the user' s failure to use the product in accordance with product manual.

Please visit the official amarancreators.com website for the latest product information.